

- ▶ THE VOGEL GALLERY
March: "Area Schools Students' Art"
April: "A New York Experience"



- ▶ THE VEEDER GALLERY
"Art of the Earth"



- ▶ THE GIFT GALLERY
Multiple Artists

Red Wing Arts Association

418 Levee Street
Red Wing, MN 55066
651-388-7569
rwaa@redwing.net
redwingartsassociation.org

March/April 2010

Arts *flash*

Red Wing Arts Association is committed to a focus on the arts by creating strong support of, and being a catalyst for, an expanding and dynamic arts community in Red Wing and the surrounding area.

Opening March 5, 2010 in the Veeder Gallery

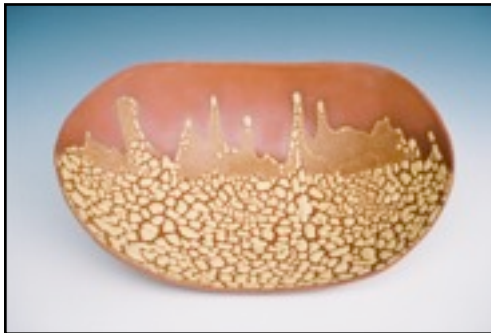
"The Art of the Earth"

Ceramics Arts by Regional Artists

Display Dates: March 5 - May 2, 2010

Kids-n-Clay Workshop: March 6, 1:00 - 2:00 PM

Public Reception: March 6, 4:00 - 6:00 PM



Ceramic pieces by Marta Matray



From earthy and functional to highly glazed decorative pottery pieces, "The Art of the Earth" showcases several regional ceramic artists.

Marta Matray, one of the featured potters, talks about the creative process. "I like to experiment with different clay bodies and various firing methods. I love to improvise, to let my intuitions lead me, and if I am lucky enough clay itself inspires me. The influences come from places I traveled to: the ruins of Pompeii, Italy, the volcanos and lava fields of Hawaii, the Grand Canyon in the States, and where the beach meets the rocky

desert in Mexico. I am fascinated by: the harmony of waves (in sand and sea), the rhythm of the rolling countryside in Hungary, the erosion in found objects, opposites in texture, as pristine against refined." Marta Matray's pottery is hand built, textural and sculptural.

Joining Marta in expressing their affinity for and interpretation of this versatile product of the earth are: Kelly Clark, Susan Palmer, Angela Foley, Judy Williams, Ellen Hudson, Sarah Singer, Tom Larkin, Ingrid Bjersted Rogers, and Karen Caldwell. The artists will be introduced during the reception March 6th at 5:00 pm.



The versatility of this medium is exemplified by the various types of clay, glazes, and firing processes it utilizes. Intense heat of over 1850 degrees brings about vitrification which can determine whether a piece is functional or decorative.

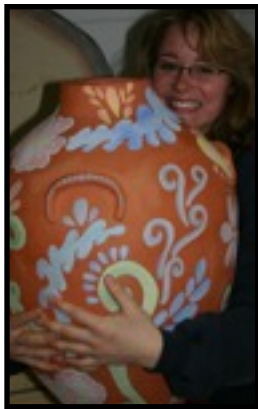
To learn more please join us for this wonderful exhibit.

A "Kids-n-Clay" Workshop conducted by potter, Julie DeVetter will be held Saturday, March 6th. Children can experience this earthy medium and bring home either a pinch pot or kitchen magnet to dry and later paint with acrylics.

Opening March 5, 2010 in the Vogel Gallery

“Area Schools Students’ Art Show”

Display Dates: March 5 - April 3, 2010
Public Reception: March 6, 2:00 - 4:00 PM



Jackie Friedrich,
RWHS

Like a proud parent or teacher, the RWAA is happy to share with you the art of Red Wing, Ellsworth, Lake City and Goodhue students. From kindergarteners just starting their art careers to seniors, there will be a wide variety of age levels and talent on display. Also included in the show will be the local winners of the Red Wing Sister Cities Commission's International Student Art Contest. Students and teachers will be introduced during the reception March 6th at 3:00 pm.

Opening April 9, 2010 in the Vogel Gallery

“A New York Experience”

University of Minnesota Moorhead Student Show

Display Dates: April 9 - May 2, 2010
Public Reception: April 10, 6:00-8:00 PM



Busted in China Town by Dustin Young

Anything can happen with college students studying art in New York City, including wonderful pieces of art. See what University of Minnesota Moorhead students achieved during this once in a lifetime experience. The artists will be introduced at 7:00 PM during the public reception.

“The Creative Artwork of Ted Horn”

Display Dates: February 23 -April 20, 2010
at Fairview Red Wing Medical Center



“Fascinated” by Ted Horn

The Red Wing Arts Association and Fairview Red Wing Medical Center announce the opening of a new art show in the cafeteria and lower level at Fairview Red Wing titled “The Creative Artwork of Ted Horn”. Included in the 20 piece show will be pieces titled “Fairies in the Garden” (2008 Red Wing Garden Tour), “The Boathouses” (an iconic

Red Wing scene), “The Rustic Road” (a fall Pierce County Photo), and “The Rush” (a colorful fall image of a trout angler fishing in a stream).

Artist’s Statement: “As a photographer-artist, I am always trying to capture the moment in time when the sensational colors of a sunset cannot be described in words, or capture the antics of a child that brings a smile

to your face or a warm glow inside; or to capture the image of a sailboat as it glides through the water guided by an unseen force. My hope for those who see my artwork is they will feel what I am feeling and trying to capture on canvas, i.e. the silence, a wisp of wind as it propels the sailboat, the serene sound of water that laps upon the shore, the

fragrance of a flower in a garden, and be drawn into the peaceful images I create.”

Ted Horn was driving a school bus on September 11th, 2001, when it was struck head-on by a passenger van. Through many surgeries and months of recovery, his doctors were able to save his leg that was severely damaged in the accident. During his year-long recovery he taught himself to use a computer and the techniques of using a digital camera and photo software.

Although the injuries left him disabled, he lives independently and spends his time working on his art. His artwork pieces together a photograph or design he creates using a camera and a computer. He then uses software programs for his palette, canvas and brushes. Using a stylus as a brush, he paints, softens and shades to produce special effects in his images.

Dan's Doodling: The Gurney's Seed Catalog

by Dan Guida, RWAA Director



seeds to be planted once spring arrived. It was the promise of warm days, strawberry shortcake, rhubarb pie and sweet peas fresh from the garden.

For me, looking at our 2010 Calendar of Events, is somewhat like looking at the seed catalog. It is the promise of terrific arts events to come, particularly our summer "Experience the Arts" celebration in June, July and August. We are integrating the arts activities of our major summer arts events, the Plein Air Arts Festival, Concerts in the Park series, and the Garden Tour. Our goal is to broaden the scope of each program to be inclusive of a wider range of arts experiences.

The Plein Air Arts Festival will be held from June 21 – June 26. Each day of the Festival, we schedule a painting theme for the artists. The theme for Wednesday, June 23rd is "Paint the Parks" with artists painting in any of the parks in Red Wing. That week, our first Wednesday evening summer concert will feature the Back Channel Blues Band. During the concert, the Plein Air artists will be at Central Park painting scenes in the park. We also plan to have a featured artist at each

Wednesday night concert. We have nine concerts scheduled in Central Park this summer!

The annual Garden Tour will be held on Sunday, July 11th. To expand the artistic experience during the garden tour, we are adding a photography component. We will have a "Photographing the Garden" workshop on the Saturday, July 10th, prior to the Tour. While on the Tour, visitors are invited to take photographs in each of the gardens. On the Saturday and Sunday, July 24th – 25th, the Depot Gallery will feature an "Experience the Arts" Celebration. Photographers will be invited to select one photo from each garden and display them at the celebration. Also on display will be the artwork created by our Garden Tour Artists.

The days are getting longer and the sun's rays are warmer. Spring is just around the corner. Take a few minutes to look over our 2010 Gallery and Event Schedule. Plan to "Experience the Arts" throughout the year at our many gallery shows and arts events.

It seems as though it has been a long winter. We are all looking for any sign of spring.

Growing up in Minnesota, there was one thing all our family looked forward to, and that was the arrival of the Gurney's Seed Catalog. The whole family was involved in selecting the varieties of vegetable and flower

Vital Volunteers: Jim Rosasco

By Robin Rooney-Rongitsch

Volunteers are the life's blood of the Red Wing Arts Association (RWAA) and they are often unsung heroes. To show our appreciation I would like to showcase these special individuals. For my first column I have chosen to focus on Jim Rosasco.

Jim is a past president of the RWAA and has been a member since moving to Red Wing in 1959. Since retiring as the Director of Counseling at Red Wing High School, Jim is often the 'Tuesday Docent' at the Depot Gallery. He prides himself on his knowledge of the RWAA artist's and their work. Jim said his favorite part of volunteering is, "Meeting the public and talking to folks."

Jim was introduced to the RWAA by his wife, artist Ardie Rosasco. She said, "When we moved to Red Wing, I called Marge Vogel first thing!" They joined the fledgling

group. The group met in many different locations over the years. They are thrilled with the Depot location. "The location is beautiful," Jim said. "The trains, the river boats, the private boats and everything going on. I hope we never lose it!"



Photo by Ted Horn

Jim observed that the biggest change he has seen over the years is that the RWAA Depot Gallery has become a 'Destination!' People used to come to Red Wing for other purposes and stop by to visit; now they come to Red Wing specifically to visit the Depot Gallery. To quote Jim, "This is impressive!" He is especially

grateful to the City of Red Wing and the Red Wing Foundation, two entities whose generosity over the years helped make this possible.

Jim served in WWII with the US Army Air Corp until he left the service in 1946. Jim is also an avid Civil War Re-enactor with the Second Minnesota Light Artillery Unit.

Continued on page 4

You should stop by the Anderson Center to see his wife's wonderful portrait of him in his Second Minnesota uniform!

Jim asked me to encourage RWAA members to become docents. A docent works at the Depot Gallery as a combined greeter/sales person/art cheerleader and is often the first introduction the public has to the RWAA. The docent's knowledge of artists and their ability to educate the public about them is a valuable asset.

Monthly volunteer update meetings and artist bios are some of the ways a docent learns about the RWAA.

I am inviting all of you stop by to visit. Talk to Jim or the docent volunteering the day you are here. Find out what is new in the gallery, enjoy the history of the Red Wing Depot, the beauty of our location and the fruit of the labor of countless volunteers like Jim.

"CALL FOR ARTISTS"

Registration begins March 1st for the Plein Air Arts Festival and is ongoing.

Registration begins March 1st for the Fall Festival and its registration closes June 1st.

Forms for registration can be found at our website www.redwingartsassociation.org

TECHIE'S CORNER

- www.redwingartsassociation.org Check out our website for our soon to be released **RWAA Calendar**. We plan on bringing you a day to day calendar of activities and events that you can click on and access detailed descriptions of who, what why, where and when.
- **Become a fan** of the **Red Wing Arts Association Depot Gallery** page on Facebook and you will receive event updates, reminders and invitations sent directly to you on your Facebook home page. Leave us comments and join in discussions.

Important Dates

- February 23: "The Creative Artwork of Ted Horn"
- March 1: Artist Registration opens for: Plein Air Festival and Fall Festival (forms online)
- March 5: "Art of the Earth" opening
"Area Schools Students' Art" opening
- March 6: Kids 'n' Clay Workshop 1-2 pm
Public Reception-"Area Schools" 2-4 pm
Public Reception-"Art of the Earth" 4-6 pm
- March 17: Volunteer Update 9 am
- March 18: RWAA Board Meeting (Call first) 7 pm
- April 5-6: Take down "Area Schools"
- April 7-8: Install "A New York Experience"
- April 9: "A New York Experience" opening
Newsletter articles due
- April 10: Public Reception- "A New York Experience" 6-8 pm
- April 15: RWAA Board Meeting 7 pm
- April 20: Newsletter to printer
- April 21: Volunteer Update 9:00 am
- April 23: Newsletter mailing
- May 3-6 Take down and install shows

NON-PROFIT ORG.
U.S. POSTAGE PAID
RED WING, MN
PERMIT 297

Red Wing Arts
Association
418 Levee Street
Red Wing, MN 55066

